

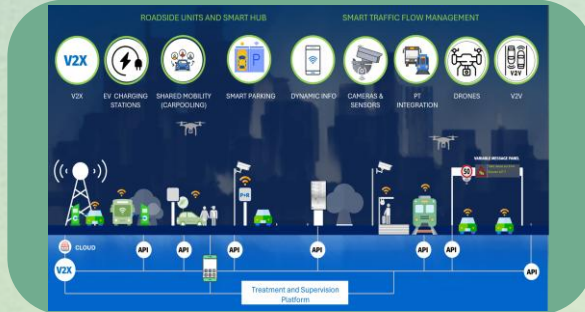
# Poissy, Yvelines - France

## Intelligent Road and Smart Traffic Management



**Code:** PO-UC01

**Brief:** Development of a real-time smart mobility hub supervision system integrating sensors, data, and V2X communication between vehicles and infrastructure.



### Key Urban Challenges Addressed:

- **Congestion and bottlenecks** around mobility hubs.
- **Limited real-time monitoring and management.**
- **Poor coordination** between transport modes.
- **Unreliable multimodal trip chains.**

### Goals & Anticipated Benefits:

- **Deploy C-ITS and V2X for smart traffic management.**
- **Integrate sensors, data, and mobility services.**
- **Evaluate impacts on traffic efficiency and safety.**
- **Deploy in phases and measure performance with KPIs.**

### Ownership:

- **VEDECOM** manages smart mobility hub system and V2X.
- **Floware** deploys sensors and provides traffic data.
- **Mobilysis** provides drone-based traffic monitoring.
- **CD78 (Yvelines)** provides infrastructure & regulatory support.

### Infrastructure:

- **Connected vehicle fleet** including three conventional electric vehicles and one automated vehicle.
- **Drone-based traffic monitoring** for supporting real-time traffic analysis.
- **Sensor and roadside infrastructure** with V2X communication units.
- **Digital systems** including V2X, C-ITS services, and 5G/LTE connectivity, and AI enabled demand prediction model

### Location:

The Paris/Yvelines LL focuses on Poissy (as the main mobility hub) and Triel-sur-Seine (as feeder mobility hub) which are a commune in the Yvelines department in the Île-de-France region in north-central France, north-west of Paris.

### Timeline:

